

# North Deck Burj Al Arab Jumeirah



# How was it developed?

## Why is its production big news?

- Developed by marine construction experts
- Shipyard that specialises construction of cruise ships and yachts
- Transported by sea
- Size is **10,000 m<sup>2</sup>**
- Minimum disturbance to guests because it was built offshore
- Minimum disturbance to sea life



# HOW WILL IT LOOK?



# North Deck



North Deck will be  
ready and look like  
this by Quarter 2 of  
2016

# North Deck





# A Closer Look at the features:



# Fresh Water Swimming Pool + Salt Water Swimming Pool

---





# 4 Jacuzzis – Each 15m<sup>2</sup>



# 24 Business Class Cabanas







BURJ AL ARAB®  
Jumeirah

## 8 First Class Cabanas

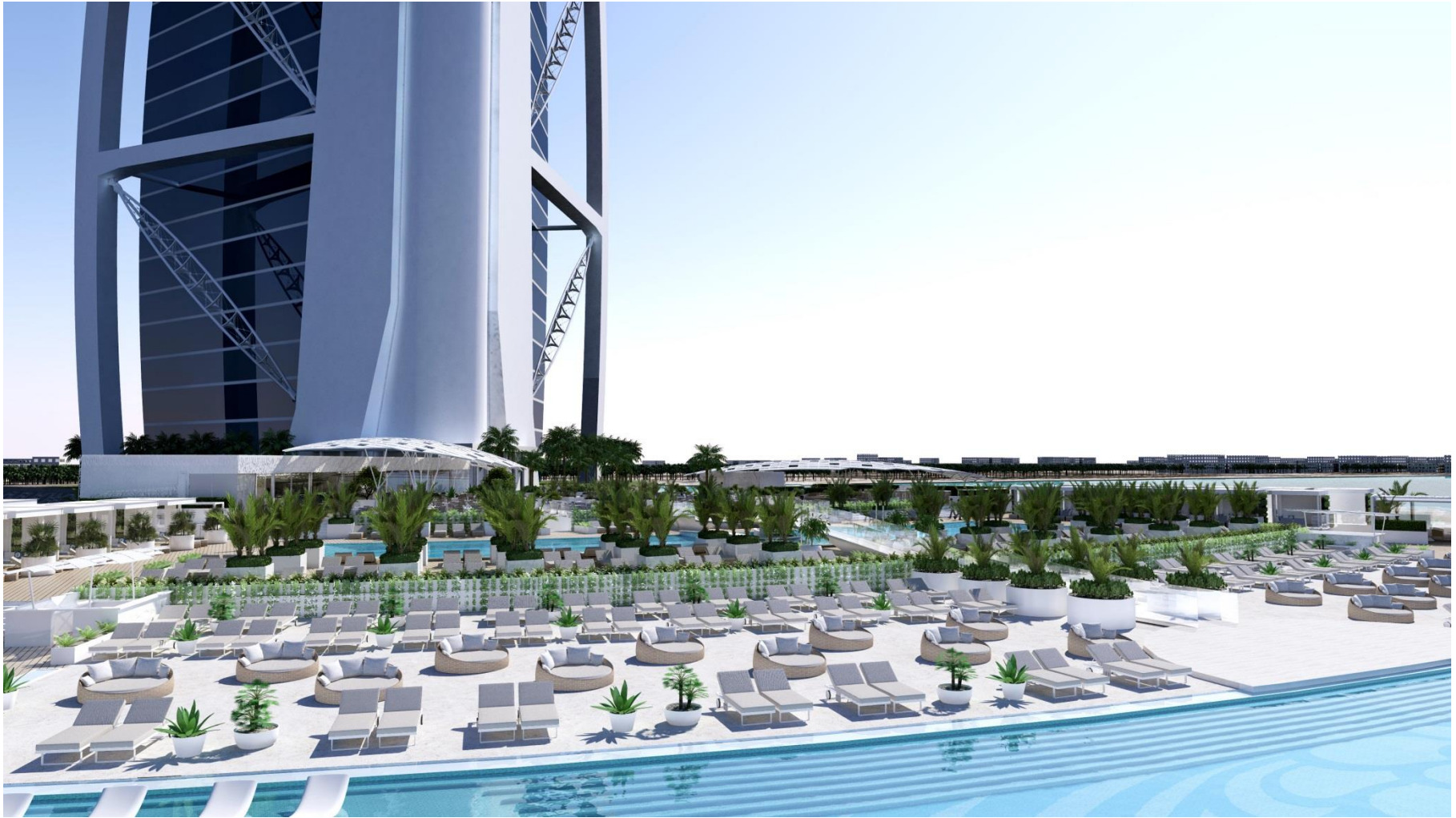
With sea and deck views, toilets and showers

---





# 400 Sun Loungers



# 2 Floors – Changing Rooms in Lower Level



BURJ AL ARAB®  
Jumeirah

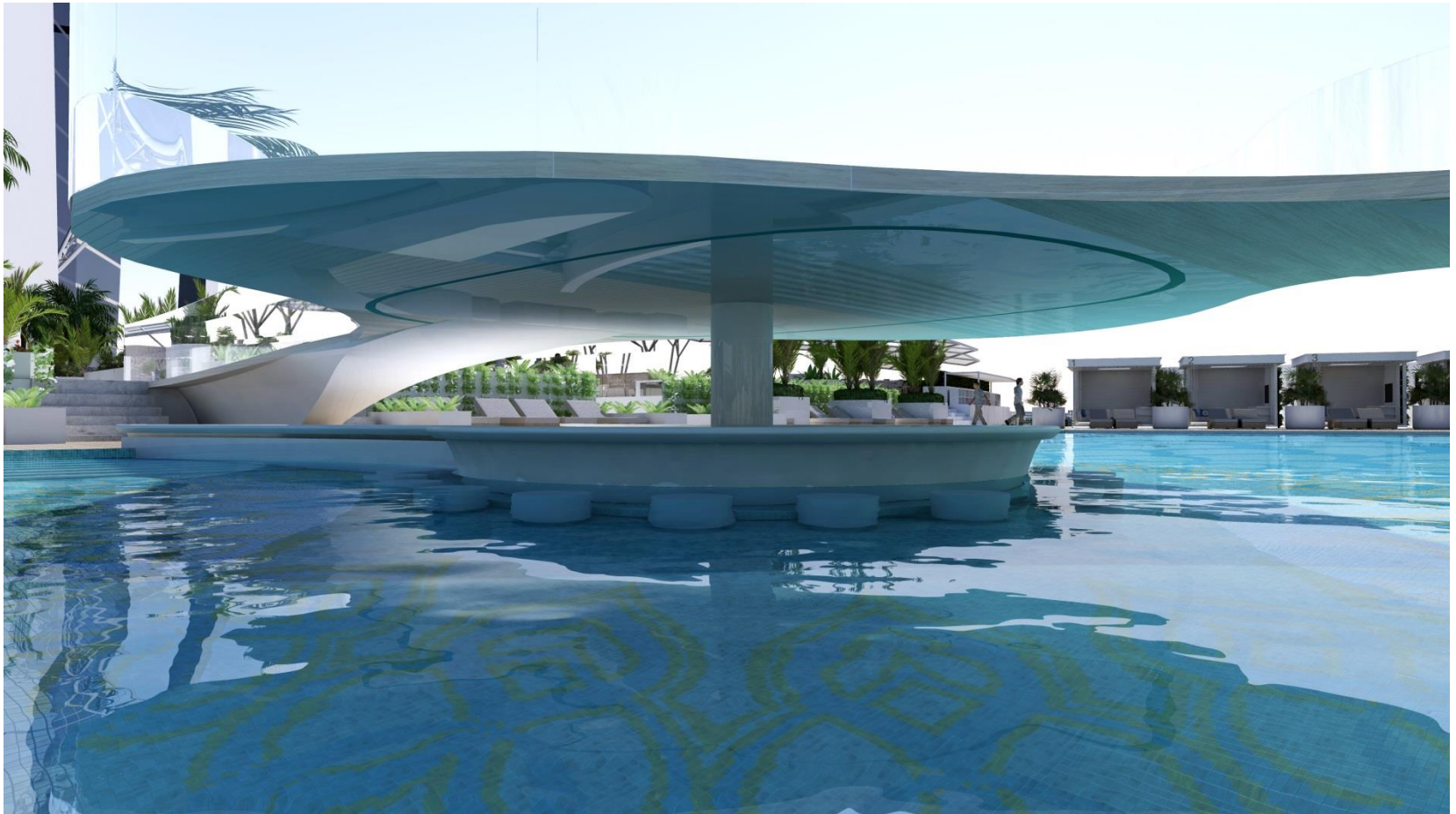




# Swim Up Bar



BURJ AL ARAB®  
Jumeirah







BURJ AL ARAB®  
Jumeirah

# The Restaurant



- Relaxed dining with spacious terrace seating.
- 180 covers
- Open to outside guests

# The Restaurant

## Style of food:



- Santa Monica style modern cuisine
- Fresh lively ingredients
- Vibrant colors



# The Bar



- Outdoor bar
- More information to follow





BURJ AL ARAB®  
Jumeirah

THANK YOU!